

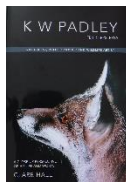


K W PADLEY FBIIP FRPS FRSA

FOR SALE CATALOGUE November 2021

The thumbnail pictures here are just for identification purposes. Please refer to www.kennethpadleyart.com to view them in more detail. You can order through the online shop or email contact@kennethpadleyart.com. Please allow 28 days for delivery, although it will often be much less.

BOOK



**KW PADLEY FBIPP, FRPS, FRSA.
Naturalist, Photographer and Wildlife Artist.
A close-up perspective of his life and works by Clare Hale**

**Recommended Retail price £25
New price £22.50
p & p free for UK mainland. No returns.**

CARDS



Eagle Owl. Close up of head.



Golden Eagle head with rocks behind. Close up.



Heron.



Red fox at door.



Pine Martens. Pencil drawing.



Otter.



Peregrine in flight with Ptarmigans. Close up.



Peregrine in flight with Ptarmigans.



Badger



Black Labrador



Black lady



Tawny Owl on stump

Notelet style with envelopes. Blank for your own message. The text on the back reads:
Kenneth William Padley FBIPP FRPS FRSA (1926 – 2006)
Title of artwork
www.kennethpadleyart.com info@kennethpadleyart.com or contact@kennethpadleyart.com
£2.50 each or 5 for £10. Free postage for UK mainland. No returns.

ARTWORKS

Prints from digital reproductions of the original.

Sizes are approximate to allow for the variety of proportions of the originals. All prints will have a Certificate of Authenticity attached to affirm their authenticity as a Fine Art Giclée print, with Limited or Open Edition specified. The tif files used show much greater detail than the jpgs you can view on the website. They will be printed on acid free and ph neutral paper not less than 250gsm in weight and supplied in an aperture mount which will be either off white, light or dark grey or green.
Free postage for UK mainland. No returns.

Limited Edition prints from 1979

All prints will have a Certificate of Authenticity attached. Free postage for UK mainland. Returns available within 14 days of receipt of the picture. The picture will need to be returned undamaged and in its original packing.

PMT prints *

These are Photomechanical Transfer prints, produced at Ken's instigation, possibly as artist's proofs as part of the process of duplicating the images of some of his pencil drawings for sale. A very limited number of these are available. Where there are multiple copies each one is slightly different and will be numbered eg: 1 of 3. As far as I am aware these are the only copies of this type. All prints will have a Certificate of Authenticity attached. Free postage for UK mainland. Returns available within 14 days of receipt of the picture. The picture will need to be returned undamaged and in its original packing.

All prints will be packaged flat using glassine paper, acid free cellophane wrap, protective board, bubble wrap and corner protectors according to needs. They will be delivered by courier.

Originals

These will come with a Certificate of Authenticity attached and will be protected and prepared for delivery by courier according to needs. Free postage for UK mainland. Returns available within 14 days of receipt of the picture. The picture will need to be returned undamaged and in its original packing.



Badger © CODE 273

Digital prints from a colour transparency of the original watercolour/gouache with conté.
Open edition.

A4 size approximately. Mounted print: £55. Mounted and framed: £95
A3 size approximately. Mounted print: £110. Mounted and framed: £155



Badger emerging from left © CODE 4

Digital prints from a colour transparency of the original watercolour/gouache with conté.
Open edition.

A4 size approximately. Mounted print: £55. Mounted and framed: £95
A3 size approximately. Mounted print: £110. Mounted and framed: £155



Badger sleeping © CODE 7

Digital prints from the original 32.5 x 25cm pencil drawing.
Open edition.

A4 size approximately. Mounted print: £55. Mounted and framed: £95
A3 size approximately. Mounted print: £110. Mounted and framed: £155

PMT prints* also available. 2 copies only. *These vary slightly from each other and the original and in that respect are unique.* Image size 38 x 26cm. Overall size including grey border 46 x 38cm. Print only: £75. Mounted print: £90. Framed: £125.

Original. Double mounted in green with light beading. In gold frame, ready to hang. Framed image available on request. Overall size 51.5 x 45.5cm. £350. **SOLD**



Black Labrador © CODE 274

Digital prints from a colour transparency of the original watercolour/gouache with conté.

Open edition.

A4 size approximately. Mounted print: £55. Mounted and framed: £95



Brent Geese over the sea © CODE 21

Digital prints from a colour print by Ken of the original watercolour/gouache with conté.

Open edition.

A4 size approximately. Mounted print: £55. Mounted and framed: £95.



Bullfinches. © CODE 260

Digital prints from the original 32 x 42cm gouache on board.

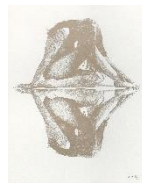
Open edition.

A4 size approximately. Mounted print: £55. Mounted and framed: £95.

A3 size approximately. Mounted print: £110. Mounted and framed: £155.

Original In white mount with black frame. Ready to hang. Framed image available on request.

Overall size 43 x 54cm. £355.



Ceres. © CODE 28

Digital prints from the original processed photograph. Original image size 49 x 39cm.

Open edition.

A4 size approximately. Mounted print: £55. Mounted and framed: £95.

A3 size approximately. Mounted print: £110. Mounted and framed: £155.

A2 size approximately. Mounted print: £150. Mounted and framed: £200.



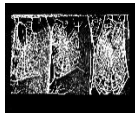
Clare. © CODE 31

Digital prints from the original 29.5 x 38.5cm pencil drawing.

Open edition.

A4 size approximately. Mounted print: £55. Mounted and framed: £95.

A3 size approximately. Mounted print: £110. Mounted and framed: £155.



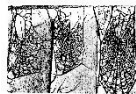
Cobwebs © CODE 32

Digital print from a black and white transparency of the original processed photograph.

Open edition.

A4 size approximately.

Mounted print: £55. Mounted and framed: £95



Cobwebs. Colour inversion. © CODE 32a

Digital print from a black and white transparency of the original processed photograph.

Open edition.

A4 size approximately.

Mounted print: £55. Mounted and framed: £95



Dogfox with vixen. © CODE 105

Limited edition prints. There is just one of these left from the original 500 Limited Edition prints made in 1979 from the gouache and conté original. Image size 63.5cm x 39cm.

- Number 500/500. Signed individually by the artist. In a grey mount with marquetry style rich brown frame with gilt. Framed image available on request. Overall size 87.5 x 62.5 cm. Ready to hang. £325.

There are three more of the same from a subsequent printing in the same year of 350 additional prints. Image size 63.5cm x 39cm.

- Number 54/850. Signed individually by the artist. The print is very slightly faded. In beige coloured mount with narrow gilt and wood coloured frame. Overall size. 80 x 57cm. Ready to hang. £245.
- Number 578/850. Signed individually by the artist. Overall size 77.5 x 53.5cm. Not mounted or framed: £225. Mounted and framed: £275
- Unnumbered and unsigned print, one of 850. Overall size 77.5 x 53.5cm. Not mounted or framed: £150. Mounted and framed: £200



Dogfox with vixen, pencil study. © CODE 110

Digital prints from the original pencil study on white card with artist's descriptive notes.
73cm x 51cm.

Open edition

A2 size approximately. Mounted print: £150. Mounted and framed: £200.

Original Immaculately framed in dark wood with gold beading. Cream mount with green beading.
Overall mounted size 51.5 x 76cm. Framed image available on request.
£875.



Dr Jekyll and Mr Hyde. 1970 -1974. © CODE 35

Digital prints from the original processed photograph.

Open edition.

A4 size approximately. Mounted print: £55. Mounted and framed: £95.

A3 size approximately. Mounted print: £110. Mounted and framed: £155.

A2 size approximately. Mounted print: £150. Mounted and framed: £200.



Eagle owl. Close up of head. © CODE 57

Digital prints from a colour print by Ken of a close up from the "Eagle Owls" original watercolour/gouache with conté.

Open edition.

A4 size approximately. Mounted print: £55. Mounted and framed: £95.



Eagle Owl. Close up of head, side view ©CODE 57a

Digital prints from a colour print by Ken of the close up from the “Eagle Owls” original watercolour/gouache with conté.

Open edition.

A4 size approximately. Mounted print: £55. Mounted and framed: £95.



Fallow deer. Young buck dark form. © CODE 65

Digital prints from a Photomechanical print of the original pencil drawing. *Please note that due to the constraints of producing an image from this a barely visible screen does appear on the printed picture, as it does on the digital one.*

Open edition.

A4 size approximately. Mounted print: £55. Mounted and framed: £95. Overall mounted size 40.5 x 32.5cm.

A3 size approximately. Mounted print: £110. Mounted and framed: £155.

PMT prints* also available. 3 copies only. These vary slightly from each other and the original and in that respect are unique. Image size 35 x 27cm. Overall size including grey border 46 x 35cm. Print only: £75. Mounted: £90 Framed: £125.



Fox head. Close up from Fox head with mouse. © CODE 85

Digital prints from a colour print by Ken of the close up from the Fox head with mouse original watercolour/gouache with conté.

Open edition.

A4 size approximately. Mounted print: £55. Mounted and framed: £95.



Fox with campion. © CODE 73

Digital prints from a digital reproduction of the original watercolour/gouache with conté instigated by Ken.

Open edition.

A4 size approximately. Mounted print: £55. Mounted and framed: £95.
A3 size approximately. Mounted print: £110. Mounted and framed: £155.



Fox with mouth agape. © CODE 69

Digital prints from a digital reproduction by Ken of the close up of the head of the dog fox from “Dogfox with vixen” original gouache with conté.

Open edition.

A4 size approximately. Mounted print: £55. Mounted and framed: £95.



Golden Eagle ♂ Study of heads. © CODE 48

Digital prints from a Photomechanical print of the original pencil drawing. *Please note that although a “screen” may appear on the picture when viewing this on the website or the thumbnail it is not visible on the digital prints.*

Open edition.

A4 size approximately. Mounted print: £55. Mounted and framed: £95

A3 size approximately. Mounted print: £110. Mounted and framed: £155

PMT print* also available. 1 copy only. *Please note that there is a small blemish towards the lower part of the picture.* Image size 34 x 45cm. Mounted print: £90. Framed: £125.

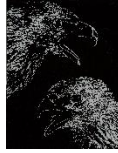


Golden Eagle head with rocks behind. Close up. © CODE 46

Digital prints from a colour print by Ken of the close up from the Golden Eagle head with rocks behind original watercolour/gouache with conté.

Open edition.

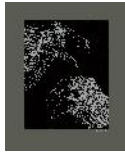
A4 size approximately. Mounted print: £55. Mounted and framed: £95.



Golden Eagle heads on black background. © CODE 54a

Digital prints from the original processed photograph.
Open edition.

A4 size approximately. Mounted print: £55. Mounted and framed: £95.
A3 size approximately. Mounted print: £110. Mounted and framed: £155.
A2 size approximately. Mounted print: £150. Mounted and framed: £200.



Original Mounted on dark green card and signed by Ken in white.
Image size 37.5 x 48.5cm. Overall size 54 x 65cm.
As seen: £250. Framed: £290.



Golden Eagle heads on blue background. © CODE 54

Digital prints from an original processed photograph.
Open edition.

A4 size approximately. Mounted print: £55. Mounted and framed: £95.
A3 size approximately. Mounted print: £110. Mounted and framed: £155.
A2 size approximately. Mounted print: £150. Mounted and framed: £200.



Golden Eagle with Ptarmigan flying behind. © CODE 36

Digital prints from a digital reproduction instigated by Ken of the original 73 x 51cm
watercolour/gouache with conté.

Open edition

A4 size approximately. Mounted print: £65. Mounted and framed: £105.
A3 size approximately. Mounted print: £120. Mounted and framed: £165.
A2 size approximately. Print only: £250. Mounted and framed: £300.



Goshawk with pheasant © CODE 120

Digital prints from a digital reproduction of the original 76 x 55cm watercolour/gouache with conté.

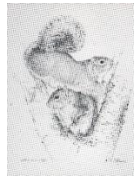
Open edition

A4 size approximately. Mounted print: £65. Mounted and framed: £105.

A3 size approximately. Mounted print: £120. Mounted and framed: £165.

A2 size approximately. Mounted print: £250. Mounted and framed: £300.

Original Double mounted in grey with gold beading. Dark wood frame with gold trim. Ready to hang. Framed image available on request. Overall size 98 x 77cm. £1,375.



Grey squirrel. Pencil study © CODE 201

PMT print* 1 copy only. Image size 26.8 x 35cm. Overall size including grey border 45.5 x 35.5cm.

Print only: £85. Framed: £125. **SOLD**



Head dress with collar on green. ©. CODE 125

Digital prints from a colour negative of the original signed processed photograph.

Open edition.

A4 size approximately. Mounted print: £55. Mounted and framed: £95.

A3 size approximately. Mounted print: £110. Mounted and framed: £155.

A2 size approximately. Mounted print: £150. Mounted and framed: £200.



Heron. © CODE 126

Digital prints from the original unfinished oil on canvas 76.5cm x 51cm.

Open edition

A4 size approximately. Mounted print: £55. Mounted and framed: £95.
A3 size approximately. Mounted print: £110. Mounted and framed: £155.
A2 size approximately. Mounted print: £150. Mounted and framed: £200.

Also available on 100% stretched cotton canvas with varnish applied for maximum protection from dust and UV. Ready to hang: £250



Jay with Weasel © CODE 130

Digital prints from a colour print by Ken of the original watercolour/gouache with conté.
Open edition.

A4 size approximately. Mounted print: £55. Mounted and framed: £95.



Kingfishers © CODE 272

Digital prints from a colour transparency of the original watercolour/gouache with conté.
Open edition.

10" x 8" size approximately. Mounted print: £55. Mounted and framed: £95



Lincoln. A view from James Street. © CODE 271

Digital prints from a colour transparency of the original watercolour/gouache with conté.
Open edition.

A4 size approximately. Mounted print: £55. Mounted and framed: £95



Mallard © CODE 149

Digital prints from the original 25.8 x 17.3 cm pencil drawing.
Open edition.

A3 size approximately. Mounted print: £110. Mounted and framed: £155

Original. Image size 25.8 x 17.3cm. Overall mounted size 30.2 x 35.2cm. Mounted image available on request.

As seen: £150. Framed: £190.

Print CODE 148

1 only. A print of the above produced and mounted on dark grey card by Ken. It is larger than the original size and with a lighter paper colour, to good effect. 36 x 27cm. Including mount 49 x 42cm.

As it is: £110. Framed £155



Osprey with fish. © CODE 157

Limited Edition Prints

There are four prints remaining of a Limited Edition of 850 prints made in 1979 from the gouache and conté original produced by the Quorn Fine Art Publishing Co. Loughborough.

Image size 28 x 35.5cm. Overall size 43 x 52cm. With printed gold beading and "mount style" surround. These are not hand signed or numbered. Image to show surround available on request.

As seen: £95. Mounted: £105. Framed: £140



Otter. © CODE 162

Digital prints from a Photomechanical print of the original pencil drawing. *Please note that a faint "screen" may appear on the picture when viewing this on the website and may also be visible on the digital prints.*

Open edition.

A4 size approximately. Mounted print: £55. Mounted and framed: £95

A3 size approximately. Mounted print: £110. Mounted and framed: £155

A2 size approximately. Mounted print: £150. Mounted and framed: £200.

PMT prints* also available. 3 copies only. These vary slightly from each other and the original and in that respect are unique. Image size 26 x 38cm. Overall size including grey border 46 x 30cm.

Print only: £75. Mounted: £90. Framed: £125.



Peregrine adult with chick © CODE 165

Digital prints from the original 67.5 x 47.5 cm conté crayon.

Open edition

A4 size approximately. Mounted print: £55. Mounted and framed: £95.
A3 size approximately. Mounted print: £110. Mounted and framed: £155.
A2 size approximately. Mounted print: £200. Mounted and framed: £250

Original Double mounted in grey with black beading. Wooden frame in light brown/grey with silver trim. Ready to hang. Framed image available on request. Overall size 92 x 70cm. £1,150.



Peregrine in flight with ptarmigans. Close up of head. © CODE 172

Digital prints from a large colour transparency by Ken of the close up of the head from “Peregrine in flight with ptarmigans” original watercolour/gouache with conté.

Open edition.

A4 size approximately. Mounted print: £55. Mounted and framed: £95.



Peregrine in flight with ptarmigans. © CODE 171

Digital prints from a large colour transparency by Ken of the original watercolour/gouache with conté.

Open edition.

A4 size approximately. Mounted print: £55. Mounted and framed: £95.
A3 size approximately. Mounted print: £110. Mounted and framed: £155



Peregrine with grouse. Close up. © CODE 168

Digital prints from a colour print by Ken of part of the original watercolour/gouache with conté.

Open edition.

A4 size approximately. Mounted print: £55. Mounted and framed: £95.



Pine Martens. Pencil study © CODE 173

Digital prints from a Photomechanical print of the original pencil drawing. *Please note that a faint "screen" may appear on the picture when viewing this on the website and may also be visible on the digital prints.*

Open edition.

A4 size approximately. Mounted print: £55. Mounted and framed: £95

A3 size approximately. Mounted print: £110. Mounted and framed: £155

A2 size approximately. Mounted print: £150. Mounted and framed: £200.

PMT prints* also available. 4 copies only. These vary slightly from each other and the original and in that respect are unique. Image size 25.5 x 38cm. Overall size including grey border approx. 46 x 30cm.

Print only: £75. Mounted: £90. Framed: £125.



Raven © CODE 178

Digital prints from the original 39.5 x 29.5cm pencil drawing.

Open edition.

A4 size approximately. Mounted print: £55. Mounted and framed: £95

A3 size approximately. Mounted print: £110. Mounted and framed: £155

Original. Immaculately double mounted in cream with dark green beading. Teak coloured wooden frame with gold trim. Ready to hang.

Image size 39.5 x 29.5cm. Overall size 54 x 43.5cm.

£350



Red Fox at door. © CODE 72

Digital prints from the original unfinished 29.5 x 39.5 cm watercolour/gouache with conté.

Open edition:

A4 size approximately. Mounted print: £55. Mounted and framed: £95.

A3 size approximately. Mounted print: £110. Mounted and framed: £155.

A2 size approximately. Mounted print: £150. Mounted and framed: £200.

Original. Immaculately double mounted in cream with dark green beading. Teak coloured wooden frame with gold trim. Ready to hang. Overall size 54 x 43.5cm. £350 **SOLD**



Red Fox at door. Pencil. © CODE 70

Digital prints from a Photomechanical print of the original pencil drawing. *Please note that although a "screen" may appear on the picture when viewing this on the website or the thumbnail it is not visible on the digital prints.*

Open edition.

A4 size approximately. Mounted print: £55. Mounted and framed: £95
A3 size approximately. Mounted print: £110. Mounted and framed: £155
A2 size approximately. Mounted print: £150. Mounted and framed: £200.

PMT prints* also available. 3 copies only. These vary slightly from each other and the original and in that respect are unique. Image size 31 x 41cm. Overall size including grey border 45.5 x 35.5cm.
Print only: £75. Mounted: £90. Framed: £125.



Red Kite on fence post. © CODE 183

Digital prints from a digital reproduction instigated by Ken of the original watercolour/gouache with conté.

Open edition.

A4 size approximately. Mounted print: £55. Mounted and framed: £95.



Red-legged Partridge. Perdix perdix. © CODE 164

Digital prints from the original 67.5 x 43 cm pencil study.

Open edition

A4 size approximately. Mounted print: £55. Mounted and framed: £95.
A3 size approximately. Mounted print: £110. Mounted and framed: £155.
A2 size approximately. Mounted print: £175. Mounted and framed: £225.

Original. Grey mount. Overall size 55.5 x 77.8cm. Mounted image available on request.
£775.



St Martin's Scamblesby © CODE 188

Digital prints from the original 31 x 51.5 cm pen and ink drawing on card.
Open edition.

A4 size approximately. Mounted print: £55. Mounted and framed: £95
A3 size approximately. Mounted print: £110. Mounted and framed: £155

Original Overall mounted size 63 x 43.5cm. Mounted image available on request.
£225.



Scottish Wildcat with Waxwing. © CODE 244

Digital prints from a colour print by Ken of the original watercolour/gouache with conté.
Open edition.

A4 size approximately. Mounted print: £55. Mounted and framed: £95.
A3 size approximately. Mounted print: £110. Mounted and framed: £155



Snow Leopard. © CODE 197

Digital prints from the original watercolour/gouache with conté oval painting.
Open edition:

A4 size approximately. Mounted print: £55. Mounted and framed: £95.
A3 size approximately. Mounted print: £150. Mounted and framed: £190.

Original. Immaculately double mounted in cream with black beading and frame. Ready to hang.
Overall size 53 x 42.6cm.

£350 **SOLD**



Snowy Owls © CODE 199

Digital prints from a large colour transparency by Ken of the original watercolour/gouache with conté.

Open edition.

A4 size approximately. Mounted print: £55. Mounted and framed: £95.
A3 size approximately. Mounted print: £150. Mounted and framed: £190.



Starling. Pencil study. © CODE 204

PMT print* 1 copy only. Image size 27.3 x 43.5cm.
Mounted: £90. Framed: £125.



Swallows with nest. © CODE 207

Digital prints from a digital reproduction of the original watercolour/gouache with conté instigated by Ken.

Open edition.

A4 size approximately. Mounted print: £55. Mounted and framed: £95.
A3 size approximately. Mounted print: £110. Mounted and framed: £155.



Swallows with halter. © CODE 213

Digital prints from a digital reproduction of the original watercolour/gouache with conté instigated by Ken.

Open edition.

A4 size approximately. Mounted print: £55. Mounted and framed: £95.
A3 size approximately. Mounted print: £110. Mounted and framed: £155.

One only: Print in immaculate gold coloured frame. Overall size 33cm x 40cm. Double mounted in grey with dark blue beading. Ready to hang. £60.



Tawny Eagle. © CODE 59

Digital prints from a Photomechanical print of the original pencil drawing. *Please note that although a “screen” may appear on the picture when viewing this on the website or the thumbnail it is not visible on the digital prints.*

Open edition.

A4 size approximately. Mounted print: £55. Mounted and framed: £95. Overall mounted size 35 x 28.5cm.

A3 size approximately. Mounted print: £110. Mounted and framed: £155

PMT prints* also available. 2 copies only. These vary slightly from each other and the original and in that respect are unique. Image size 33 x 45cm.
Print only: £85. Mounted: £90. Framed: £120.



Tawny owl on stump © CODE 218

Digital prints from a digital reproduction of the original colour photograph instigated by Ken.
A4 size approximately. Mounted print: £55. Mounted and framed: £95



Tawny owl stretching. Study. © CODE 217

PMT prints* Four of these are available. These vary slightly from each other and the original and in that respect are unique. Image size 36 x 27.5. Overall size including grey border 45 x 35.5cm.
Print only: £85. Mounted: £90. Framed: £120.



Tawny owl with mouse. © CODE 216

Digital prints from a digital reproduction of the original watercolour/gouache with conté instigated by Ken.

Open edition.

A4 size approximately. Mounted print: £55. Mounted and framed: £95.

A3 size approximately. Mounted print: £110. Mounted and framed: £135.



Trees © CODE 261

Digital prints from the original signed processed sepia toned photograph.

Open edition.

A4 size approximately. Mounted print: £55. Mounted and framed: £95.

A3 size approximately. Mounted print: £110. Mounted and framed: £155.

A2 size approximately. Mounted print: £150. Mounted and framed: £200.

Original. Mounted on green card with a gold beading with handmade printed signature by Ken.

Image size 39.5 x 50cm. Overall size 50.4 x 60.8cm.

As seen: £250. Framed: £290.



Water Rail © CODE 237

Digital prints from a colour transparency of the original watercolour/gouache with conté.

Open edition.

A4 size approximately. Mounted print: £55. Mounted and framed: £95

A3 size approximately. Mounted print: £110. Mounted and framed: £155



Wheatears © CODE 240

Digital prints from a colour print of the original watercolour/gouache with conté.

Open edition.

A4 size approximately. Mounted print: £55. Mounted and framed: £95

A3 size approximately. Mounted print: £110. Mounted and framed: £155