



K W PADLEY FBIIP FRPS FRSA

FOR SALE CATALOGUE October 2022

The thumbnail pictures here are just for identification purposes. Please refer to www.kennethpadleyart.com to view them in more detail. You can order through the online shop or email contact@kennethpadleyart.com. Please allow 28 days for delivery, although it will often be much less.

BOOK



**KW PADLEY FBIPP, FRPS, FRSA.
Naturalist, Photographer and Wildlife Artist.
A close-up perspective of his life and works by Clare Hale**

**Recommended Retail price £25
New price £22.50
p & p free for UK mainland. No returns.**

CARDS



Eagle Owl. Close up of head.



Golden Eagle head with rocks behind. Close up.



Heron.



Red fox at door.



Pine Martens. Pencil drawing.



Otter.



Peregrine in flight with Ptarmigans. Close up.



Peregrine in flight with Ptarmigans.



Badger



Black Labrador



Black lady



Tawny Owl on stump

Notelet style with envelopes. Blank for your own message. The text on the back reads:
Kenneth William Padley FBIPP FRPS FRSA (1926 – 2006)
Title of artwork
www.kennethpadleyart.com info@kennethpadleyart.com or contact@kennethpadleyart.com
£2.50 each or 5 for £10. Free postage for UK mainland. No returns.

ARTWORKS

Giclée prints from digital reproductions of the original.

Sizes are approximate. All prints will have a Certificate of Authenticity attached to affirm their authenticity as a Fine Art Giclée print, with Limited or Open Edition specified. The tif files used show much greater detail than the jpgs you can view on the website. They are printed on acid free and ph neutral paper not less than 250gsm in weight. Free postage for UK mainland. No returns.

Limited Edition prints from 1979

All prints will have a Certificate of Authenticity attached. Free postage for UK mainland. Returns available within 14 days of receipt of the picture. The picture will need to be returned undamaged and in its original packing, and carriage paid by the buyer.

PMT prints *

These are Photomechanical Transfer prints, produced at Ken's instigation, possibly as artist's proofs as part of the process of duplicating the images of some of his pencil drawings for sale. A very limited number of these are available. Where there are multiple copies each one is slightly different.

As far as I am aware these are the only copies of this type. All prints will have a Certificate of Authenticity attached. Free postage for UK mainland. Returns available within 14 days of receipt of the picture. The picture will need to be returned undamaged and in its original packing, and carriage paid by the buyer.

All prints will be packaged flat using glassine paper, acid free cellophane wrap, protective board, bubble wrap and corner protectors according to needs. They will be delivered by courier.

Originals

These will come with a Certificate of Authenticity attached and will be protected and prepared for delivery by courier according to needs. Free postage for UK mainland. Returns available within 14 days of receipt of the picture. The picture will need to be returned undamaged and in its original packing, and carriage paid by the buyer.



Badger © CODE 273

Giclée print from a colour transparency of the original watercolour/gouache with conté.
Open edition in superior light oak coloured frame with white mount.
Overall size 36 x 44cm
£80



Badger emerging from left © CODE 4

Giclée print from a colour transparency of the original watercolour/gouache with conté.
Open edition, in light oak coloured frame with white mount.
Overall size 32.5 x 42.5cm
£60



Badger sleeping © CODE 7

PMT prints* from the original 32.5 x 25cm pencil drawing. 2 copies only. *These vary slightly from each other and the original and in that respect are unique.* Image size 37 x 25cm approx. Overall size 49 x 37cm approx. In white mount.
£70

Original. Double mounted in green with light beading. Overall size 51.5 x 45.5cm.
Not for sale.



Black Labrador © CODE 274

Giclée print from a colour transparency of the original watercolour/gouache with conté.
Open edition in superior light oak coloured frame with white mount.

Overall size 35.5 x 41.5cm
£80

Giclée print from a colour transparency of the original watercolour/gouache with conte in
white mount.

Overall size 38 x 32.5cm
£45



Brent Geese over the sea © CODE 21

Giclée print from a colour print by Ken of the original watercolour/gouache with conté.
Open edition, in light oak coloured frame with white mount.

Overall size 32.5 x 42.5cm
£60

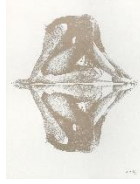


Bullfinches. © CODE 260

Giclée print from a digital image of the original gouache on board.
Open edition, in oak coloured frame with white mount.

Overall size 32.5 x 42.5cm
£60

Original In white mount with black frame. Ready to hang. Framed image available on request.
Overall size 43 x 54cm. £355.



Ceres. © CODE 28

Giclée print from the original processed photograph.
Open edition, in light oak coloured frame with white mount.
Overall size 32.5 x 42.5cm
£60

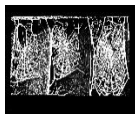
Original processed photograph. Image size 49 x 39cm. Overall size 62.5 x 77.5cm. Dark green border to image with dark grey mount and gilt coloured frame.
Not for sale.



Clare. © CODE 31

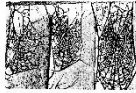
Giclée print from the original 29.5 x 38.5cm pencil drawing in white mount.
Open edition.
Overall size 32 x 41cm
£45

Original pencil drawing, double mounted in green with gilt frame. Overall size 55 x 44 cm.
Not for sale.



Cobwebs © CODE 32

Giclée print from a black and white transparency of the original processed photograph.
Open edition, in light oak coloured frame with white mount.
Overall size 32.5 x 42.5cm
£60



Cobwebs. Colour inversion. © CODE 32a

Giclée print from a black and white transparency of the original processed photograph.

Open edition, in light oak coloured frame with white mount.

Overall size 32.5 x 42.5cm

£60



Dogfox with vixen. © CODE 105

Limited edition prints. There is just one of these left from the original 500 Limited Edition prints made in 1979 from the gouache and conté original. Image size 63.5cm x 39cm.

- Number 500/500. Signed by the artist. In a grey mount with marquetry style rich brown frame with gilt. Framed image available on request. Overall size 87.5 x 62.5 cm.

£325

There are three more of the same from a subsequent printing in the same year of 350 additional prints. Image size 63.5cm x 39cm.

- Number 54/850. Signed by the artist. The print is very slightly faded. In beige coloured mount with narrow gilt and wood coloured frame. Overall size. 80 x 57cm.

£245

- Number 578/850. Signed by the artist. Overall size 77.5 x 53.5cm.
Not mounted or framed.

£205

- Unnumbered and unsigned print, one of 850. Overall size 77.5 x 53.5cm.
Not mounted or framed.

£150



Dogfox with vixen, pencil study. © CODE 110

Original pencil study on white card with artist's descriptive notes.

73cm x 51cm.

Immaculately framed in dark wood with gold beading. Cream mount with green beading. Overall size

51.5 x 76cm.

£875.



Dr Jekyll and Mr Hyde. 1970 -1974. © CODE 35

Giclée print from the original processed photograph in white mount.

Open edition.

Overall size 38 x 33.5cm

£45



Eagle Owl. Bubo bubo. © CODE 55

Giclée print from an original colour negative taken by Ken of the original watercolour/gouache with conté.

Open edition, in light oak coloured frame with white mount.

Overall size 32.5 x 42.5cm

£60



Eagle owl. Close up of head. © CODE 57

Giclée print from a colour print by Ken of a close up from the “Eagle Owls” original watercolour/gouache with conté.

Open edition, in light oak coloured frame with white mount.

Overall size 32.5 x 42.5cm

£60



Eagle Owl. Close up of head, side view ©CODE 57a

Giclée print from a colour print by Ken of the close up from the “Eagle Owls” original watercolour/gouache with conté.

Open edition, in light oak coloured frame with white mount.

Overall size 32.5 x 42.5cm

£60



Fallow deer. Young buck dark form. © CODE 65

Giclée print from a Photomechanical transfer of the original pencil drawing. *Please note that although a “screen” may appear on the picture when viewing this on the website or the thumbnail it is not visible on the digital prints.*

Open edition, in light oak coloured frame with grey mount.

Overall size 32.5 x 42.5cm

£65

PMT prints* 3 available. These vary slightly from each other and the original and in that respect are unique. Image size 35 x 27cm.

1) Overall size including grey border, white mount and light oak coloured frame 42.5 x 52.5 cm

2) Overall size including white double mount and light oak coloured frame 42.5 x 52.5 cm

£85

3) Image size 33.5 x 26cm. Overall size 45.5 x 39cm in white mount.

£70



Fox head. Close up from Fox head with mouse. © CODE 85

Giclée print from a colour transparency of the original watercolour/gouache with conté.

Open edition in superior light oak coloured frame with white mount.

Overall size 36 x 40.5cm

£80

Giclée print from a colour transparency of the original watercolour/gouache with conté.

Open edition, in light oak coloured frame with white mount.

Overall size 32.5 x 42.5cm

£60



Fox with campion. © CODE 73

Superb quality artist's print of the original watercolour/gouache with conte, taken by Ken and produced by him for the guests at his 80th birthday party.

Open edition.

Image size 24 x 15.5cm. Overall size 39 x 32 cm.

1 only. Double mounted in cream and green with a gilt coloured frame.

£55



Fox with mouth agape. © CODE 69

Giclée print from a colour transparency of the original watercolour/gouache with conté.

Open edition in superior light oak coloured frame with white mount.

Overall size 40.5 x 36.5 cm

£80

Giclée print from a colour transparency of the original watercolour/gouache with conté in white mount.

Overall size 37.5 x 33.5 cm.

£45



Golden Eagle ♂ Study of heads. © CODE 48

Giclée print from a Photomechanical transfer of the original pencil drawing. *Please note that although a "screen" may appear on the picture when viewing this on the website or the thumbnail it is not visible on the digital print.*

Open edition, in light oak coloured frame with white mount.

Overall size 42.5 x 32.5cm

£60

PMT print* Image size 33.5 x 44.5cm in white mount. Overall size 56.5 x 47cm.

£70



Golden Eagle head with rocks behind. Close up. © CODE 46

Giclée print from a colour transparency of the original watercolour/gouache with conté.

Open edition in superior light oak coloured frame with white mount.

Overall size 36.5 x 41cm

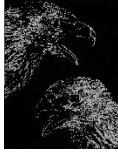
£80

Giclée print from a colour transparency of the original watercolour/gouache with conté.

Open edition, light oak coloured frame with white mount.

Overall size 32.5 x 42.5cm

£60



Golden Eagle heads on black background. © CODE 54a

Giclée print from the original. Open edition, in light oak coloured frame with white mount.

Overall size 32.5 x 42.5cm

£60

Original processed photograph mounted on dark green card and signed by Ken in white.

Image size 37.5 x 48.5cm. Overall size 54 x 65cm.

£250.



Golden Eagle heads on blue background. © CODE 54

Giclée print from the original processed photograph.

Open edition, in light oak coloured frame with white mount.

Overall size 32.5 x 42.5cm

£60

Original processed photograph. Image size 20 x 24.5. Overall size 29 x 34cm on dark grey mount with similar coloured wooden frame.

Not for sale.



Golden Eagle with Ptarmigan flying behind. © CODE 36

Giclée print from a digital reproduction instigated by Ken of the original in white mount.

Overall size 38.5 x 32.5cm

£45

Original watercolour/gouache with conte. Image size 75 x 55cm. Overall size 73 x 51cm. Double mounted in light green with wooden with gilt frame.

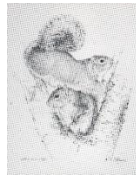
£2,450



Goshawk with pheasant © CODE 120

Giclée print from a digital reproduction of the original.
Open edition, in light oak coloured frame with white mount.
Overall size 32.5 x 42.5cm
£60

Original watercolour/gouache with conté. Double mounted in grey with gold beading. Dark wood frame with gold trim. Image size 76 x 54cm. Overall size 98 x 77cm.
£1,375.



Grey squirrel. Pencil study © CODE 201

PMT print* 1 copy only. Image size 26.8 x 35cm. Overall size including grey border 45.5 x 35.5cm.
Print only: £85. Framed: £125. **SOLD**



Head dress with collar on green. ©. CODE 125

Giclée print from a colour negative of the original signed processed photograph in white mount.
Open edition.
Overall size 39 x 32.5cm
£45



Heron. © CODE 126

Giclée print from the original. Image size 26 x 41cm. Overall size 38.5 x 54 in white mount.
Open edition
£55

Original unfinished oil on canvas 76.5cm x 51cm.
Not for sale



Jay with Weasel © CODE 130

Giclée prints from a colour print by Ken of the original watercolour/gouache with conte. Available to order.
Open edition.
Overall size 32.5 x 42.5cm approximately. Mounted print: £45. Mounted and framed: £60



Kingfishers © CODE 272

Giclée print from a colour transparency of the original watercolour/gouache with conté.
Open edition, in light oak coloured frame with white mount.
Overall size 32.5 x 42.5cm
£60



Lincoln. A view from James Street. © CODE 271

Original. Image size 25 x 17.5cm. Overall size 38 x 29.5cm in cream mount with black wooden frame.
Not for sale.



Mallard © CODE 149

Giclée print from the original pencil drawing.

Open edition.

Image size 41.5 x 27.5cm. Overall size 53.5 x 40.5cm in white mount.

£55

Original. Image size 25.8 x 17.3cm. In grey mount, overall size 30.2 x 35.2cm.

£150

Artist's Print CODE 148 1 only. A print of the above produced and mounted on dark grey card by Ken. It is larger than the original size and with a lighter paper colour, to good effect. Image size 36 x 27cm. Including mount 49 x 42cm.

£60



Osprey with fish. © CODE 157

Limited Edition Prints

There are four prints remaining of a Limited Edition of 850 prints made in 1979 from the gouache and conté original produced by the Quorn Fine Art Publishing Co. Loughborough. These are not hand signed or numbered. There are two framed copies with white mount. Image size 28 x 35.5cm. Overall size 42.5 x 52.5cm.

£95

There are also two copies mounted in white. Overall size 43.5 x 53cm.

£80



Otter. © CODE 162

Giclée print from a Photomechanical transfer print of the original pencil drawing. *Please note that a faint "screen" may appear on the picture when viewing this on the website but it is not visible on the print.*

Open edition in grey mount. Image size 27.5 x 41cm. Overall size approx. 53 x 40cm.

£70

PMT prints* also available. 3copies in white mounts. These vary slightly from each other and the original and in that respect are unique. Image size approx. 25 x 38cm. Overall size approx. 50 x 38cm.
£70 each



Peregrine adult with chick © CODE 165

Original Double mounted in grey with black beading. Wooden frame in light brown/grey with silver trim. Overall size 92 x 70cm.
£1,150



Peregrine in flight with ptarmigans. © CODE 171

Giclée prints from a large colour transparency by Ken of the original watercolour/gouache with conte. Available to order.
Open edition.

Overall size 32.5 x 42.5cm approximately. Mounted print: £45. Mounted and framed: £60



Peregrine in flight with ptarmigans. Close up of head. © CODE 172

Giclée print from the artist's large colour transparency of a close up from the original watercolour/gouache with conté.

Open edition in superior light oak coloured frame with white mount.

Overall size 36 x 41cm

£80

Giclée print from the artist's large colour transparency of a close up from the original watercolour/gouache with conte in white mount.

Overall size 38 x 34cm

£45



Peregrine with grouse. Close up. © CODE 168

Giclée print from a colour print by the artist of part of the original watercolour/gouache with conté.
Open edition, in light oak coloured frame with white mount. 2 copies available.

Overall size 32.5 x 42.5cm
£60



Pine Martens. Pencil study © CODE 173

Giclée print from a Photomechanical transfer print of the original pencil drawing. *Please note that a faint "screen" may appear on the picture when viewing this on the website but it is not visible on the print.*

Open edition in white mount. Image size 27 x 41cm. Overall size approx. 53 x 40cm.
£60

PMT prints* also available. 4 copies in white mounts. These vary slightly from each other and the original and in that respect are unique. Image size approx. 25 x 38cm. Overall size approx. 50 x 38cm.
£70 each



Raven © CODE 178

Giclée print from the original 39.5 x 29.5cm pencil drawing.
Open edition, in light oak coloured frame with white mount.

Overall size 32.5 x 42.5cm
£60

Original. Immaculately double mounted in cream with dark green beading. Teak coloured wooden frame with gold trim. Ready to hang.

Image size 39.5 x 29.5cm. Overall size 54 x 43.5cm.
£350



Red Fox at door. © CODE 72

Giclée print from the original unfinished 29.5 x 39.5 cm watercolour/gouache with conté.
Image size 32 x 29.5cm. Overall size 45 x 41.5cm.
Open edition in white mount.
£55

Original. Immaculately double mounted in cream with dark green beading. Teak coloured wooden frame with gold trim. Ready to hang. Overall size 54 x 43.5cm. £350 **SOLD**



Red Fox at door. Pencil. © CODE 70

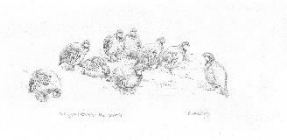
Giclée print from a Photomechanical transfer print of the original pencil drawing. *Please note that although a "screen" may appear on the picture when viewing this on the website or the thumbnail it is not visible on the digital prints.*
Open edition in white mount.
Overall size 42.5 x 52.5cm
£55

PMT print* 2 copies. These vary slightly from each other and the original and in that respect are unique. Image size 35 x 27cm. Overall size 42.5 x 52.5 cm.
White mount and light oak coloured frame.
£85
Mounted but unframed.
£70



Red Kite on fence post. © CODE 183

Giclée print from a digital reproduction instigated by Ken of the original watercolour/gouache with conté.
Open edition, in light oak coloured frame with white mount. 2 copies available.
Overall size 32.5 x 42.5cm
£60



Red-legged Partridge. Perdix perdix. © CODE 164

Original. Grey mount. Overall size 55.5 x 77.8cm. Mounted image available on request.
£775.



St Martin's Scamblesby © CODE 188

Giclée print from the original 31 x 51.5 cm pen and ink drawing on card.
Open edition, in light oak coloured frame with white mount.
Overall size 32.5 x 42.5cm
£60

Original mounted on superior quality grey board. Image size 51 x 31cm. Overall size 63 x 43.5cm in
£200.



Scottish Wildcat with Waxwing. © CODE 244

Giclée print from a colour print by Ken of the original watercolour/gouache with conté.
Open edition, in light oak coloured frame with white mount.
Overall size 32.5 x 42.5cm
£60



Snow Leopard. © CODE 197

Giclée print from a colour transparency of the original watercolour/gouache with conté.
Open edition in superior light oak coloured frame with white mount.
Overall size 36 x 40cm
£80

Giclée print from a colour transparency of the original watercolour/gouache with conte in white mount. Open edition.
Overall size 37 x 34cm
£45

Original. Immaculately double mounted in cream with black beading and frame. Ready to hang.
Overall size 53 x 42.6cm.
£350 **SOLD**



Snowy Owls © CODE 199

Giclée print from a large colour transparency by Ken of the original watercolour/gouache with conté.
Open edition, in light oak coloured frame with white mount.
Overall size 32.5 x 42.5cm
£60



Starling. Pencil study. © CODE 204

PMT print* 1 copy only. Image size 26 x 42cm in white mount. Overall size approx. 54 x 40cm.
£70



Swallows with nest. © CODE 207

Giclée print from a digital reproduction of the original watercolour/gouache with conté instigated by Ken.
Open edition, in light oak coloured frame with white mount.
Overall size 32.5 x 42.5cm
£60



Swallows with halter. © CODE 213

Superb quality artist's print of the original watercolour/gouache with conte, taken by Ken and produced by him for the guests at his 80th birthday party.

Open edition.

Image size 24 x 18 cm. Overall size 40.5 x 32.5 cm.

1 only. Double mounted in dark blue and grey with a gilt coloured frame.

£55



Tawny Eagle. © CODE 59

PMT print* This varies slightly from the original and in that respect is unique. Image size 39 x 29cm. Overall size 42.5 x 52.5 cm. White mount and light oak coloured frame.

£85

1 more available in unframed white mount. Image size 44 x 32.5cm. Overall size 56 x 45cm approx.

£70



Tawny owl on stump © CODE 218

Giclée print from a colour transparency of the original watercolour/gouache with conté.

Open edition in superior light oak coloured frame with white mount.

Overall size 35.5 x 44.5cm

£80

Giclée print from a colour transparency of the original watercolour/gouache with conté.

Open edition, in a light oak coloured frame with white mount.

Overall size 32.5 x 42.5cm

£60



Tawny owl stretching. Study. © CODE 217

PMT print* 2 copies. These vary slightly from each other and the original and in that respect are unique. Image size 36 x 27.5cm. Overall size 42.5 x 52.5 cm. Grey border, white mount and light oak coloured frame.

£85

2 more copies available in unframed white mounts.

£70



Tawny owl with mouse. © CODE 216

Giclée prints from a digital reproduction of the original watercolour/gouache with conté instigated by Ken.

Open edition, in a light oak coloured frame with white mount.

Two available.

Overall size 42.5 x 52.5 cm

£105 each



Trees © CODE 261

Original signed processed sepia toned photograph. Mounted on green card with a gold beading with handmade printed signature by Ken.

Image size 39.5 x 50cm. Overall size 50.4 x 60.8cm.

£175



Water Rail © CODE 237

Giclée print from a colour transparency of the original watercolour/gouache with conte in white mount. Overall size 33.5 x 38cm.

Open edition.

£45



Wheatears © CODE 240

Giclée print from a colour print of the original watercolour/gouache with conte in white mount.

Overall size 39 x 34cm

Open edition.

£45